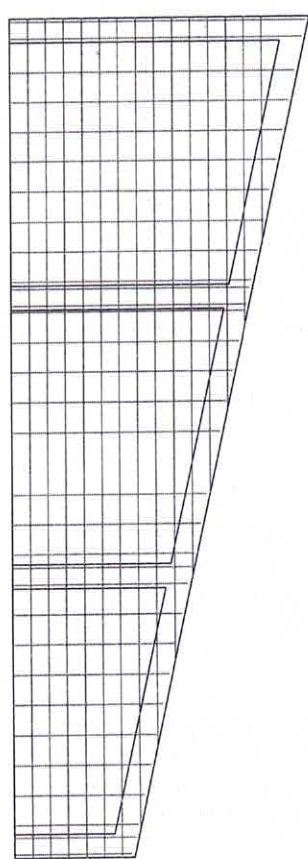
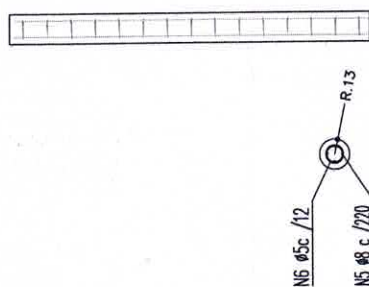
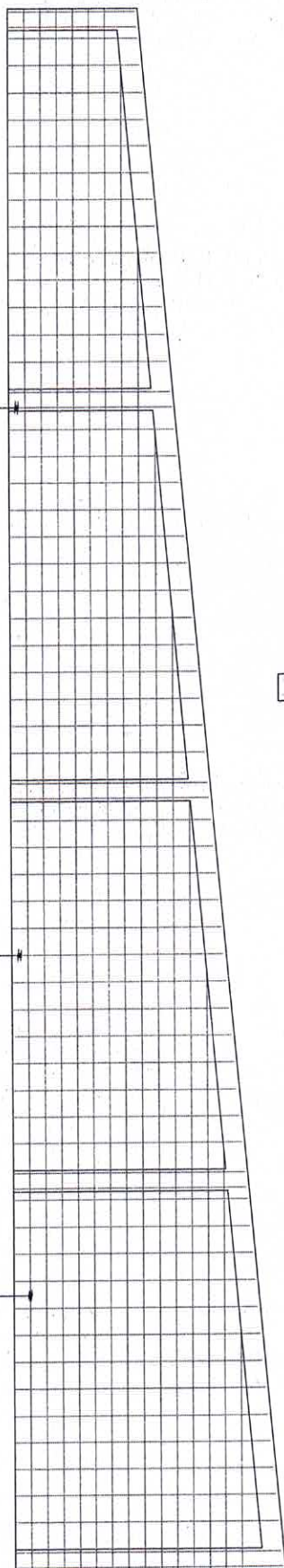
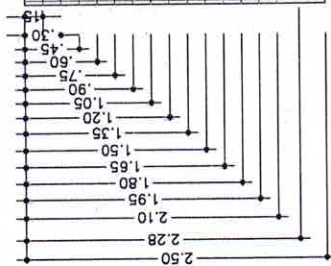


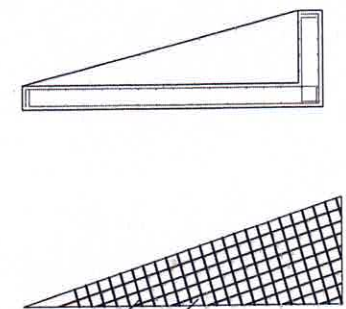
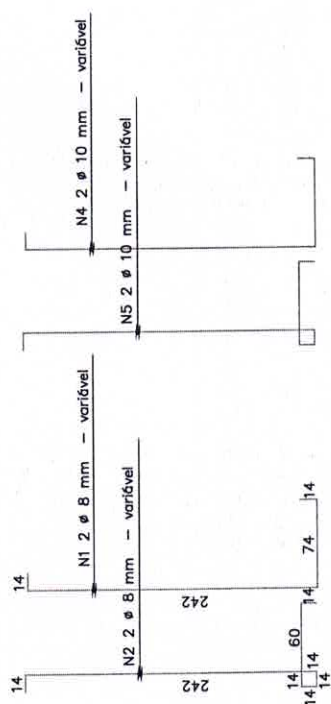
N4 2  $\phi$  10 mm - variável  
 N5 2  $\phi$  10 mm - variável

N1 1  $\phi$  8 mm cada 20 cm - variável  
 N2 1  $\phi$  8 mm cada 20 cm - variável

N3 1  $\phi$  6,3 mm cada 15 cm - variável



**ESTACA - ARMADURAS**  
 Escala : 1/50



1  $\phi$  8 mm a cada 10 cm  
 1  $\phi$  6,3 mm a cada 10 cm

**CONTRAFORTES - ARMADURAS**  
 Escala : 1/50

PROJETADA

OBRA	MURO DE CONTENÇÃO	MATERIAL	CONCRETO
	PROPRIETARIO	ORÇ	82.102.426/0001-83
PROJETO	MUNICÍPIO DE DONA EMMA	REFERÊNCIA	
	ENDEREÇO	RUA ALBERTO KOGLIN, 3493 / DONA EMMA - SC	
ESTRUTURAL	PLANTA DAS ARMADURAS DO MURO	PROPRIETARIO	THIAGO RODRIGUES
		PROPRIETARIO	MUNICÍPIO DE DONA EMMA
	ÁREA CONSTRUIDA	ESCALA	INDICADA
		RESPONSÁVEL TÉCNICO	DATA
			outubro/2022
			EST-01
			39,00 m <sup>2</sup>