



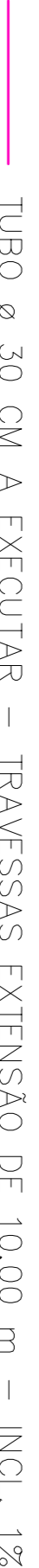


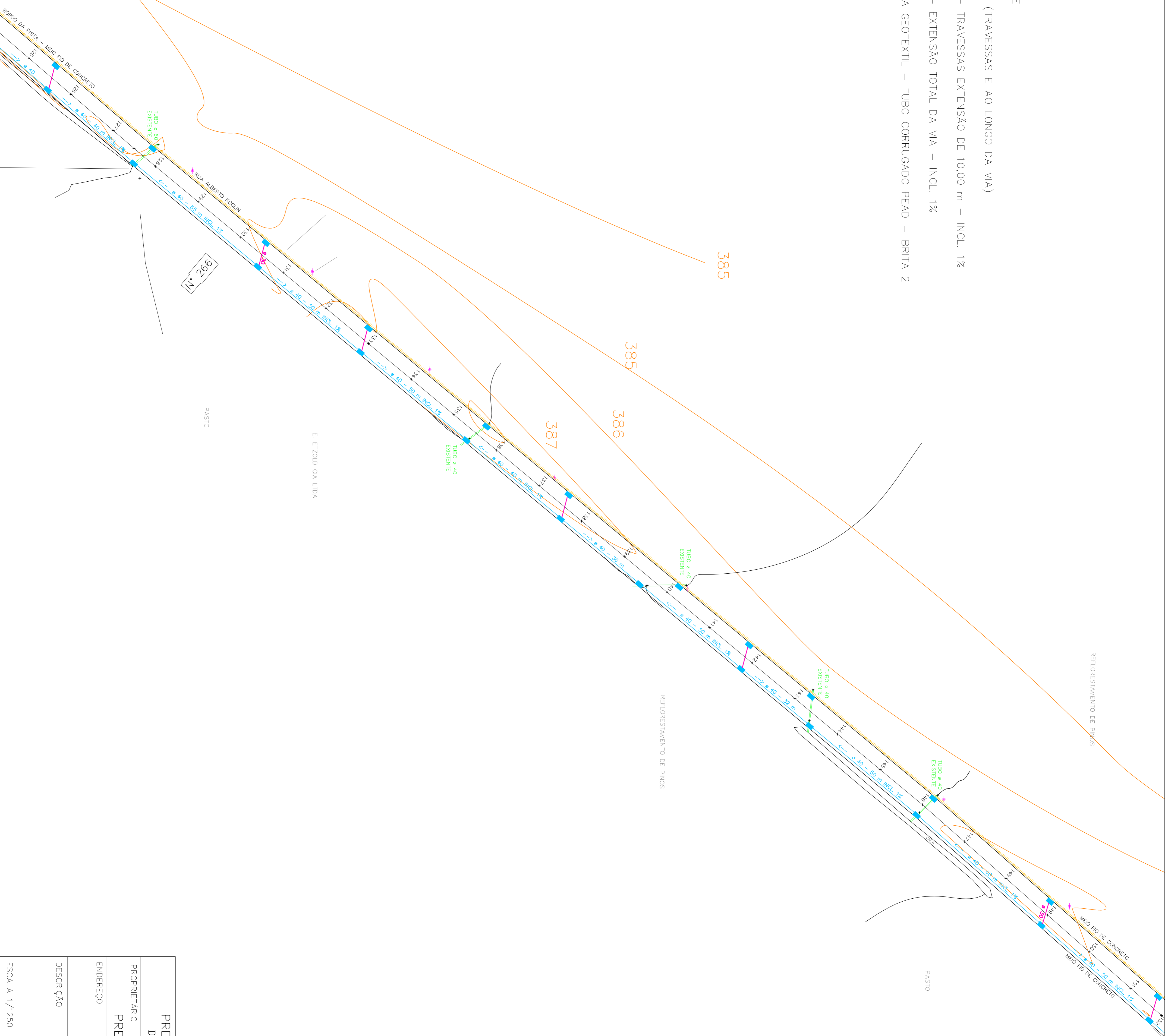
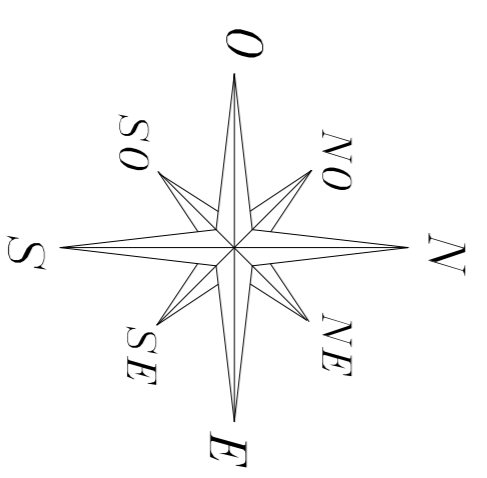


- LEGENDA
-  POSTE CELESC
 -  CURVA DE NIVEL
 -  TUBO DE CONCRETO EXISTENTE
 -  CAIXA COLETORA A EXECUTAR (TRAVESSAS E AO LONGO DA VIA)
 -  TUBO \varnothing 30 CM A EXECUTAR – TRAVESSAS EXTENSÃO DE 10,00 m – INCL. 1%
 -  TUBO \varnothing 40 CM A EXECUTAR – EXTENSÃO TOTAL DA VIA – INCL. 1%
 -  DRENO LONGITUDINAL – MANTA GEOTEXIL – TUBO CORRUGADO PEAD – BRITA 2



PROJETO DE PAVIMENTAÇÃO ASFALTICA DRENAGEM PLUVIAL E SINALIZAÇÃO VIARIA	
PROPRIETARIO PREFEITURA MUNICIPAL DE DONA EMMA	DATA 10/09/2021
ENDEREÇO RUA ALBERTO KOGLIN MUNICIPIO DE DONA EMMA – SC	F-02/02 DRENAGEM
DESCRIÇÃO EXTENSÃO – 1.110,00 m LARGURA DA PISTA – 10,00 m AREA A PAVIMENTAR – 11.089,60 m ²	ESCALA 1/1250